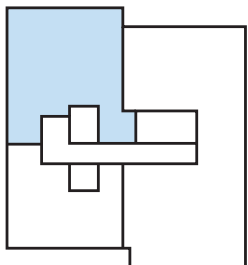
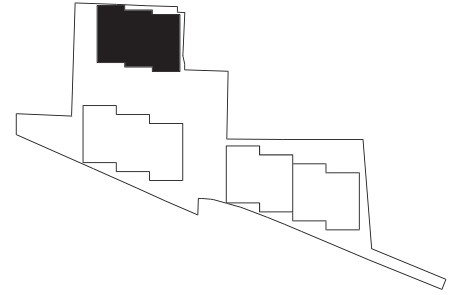


# HARROW SQUARE

## Bond Apartments

Plot 266



---

### PLOT 266 (7)

---

**Living/Dining/Kitchen**  
22'5" x 16'3" (6835 x 4960mm)

---

**Bedroom 1**  
16'4" x 9'8" (4980 x 2965mm)

---

**En suite**  
10'2" x 7'5" (3105 x 2280mm)

---

**Bedroom 2**  
14'11" x 9'10" (4550 x 3020mm)

---

**Bedroom 3**  
11'1" x 9'2" (3380 x 2800mm)

---

**Bathroom**  
7'2" x 6'6" (2200 x 2000mm)

---

**TOTAL AREA**  
1,063 sq ft (98.8 sq m)

---

**Roof Terrace**  
22'8" x 17'10" (6910 x 5440mm)

---

# Specification



Kitchen	Bathroom	Bedrooms	Communal Areas
Individually designed German kitchens with soft-close doors & drawers	Grohe brassware	Stainfree carpets with underlay to all bedrooms	12-hour concierge service
Matching worktops & full-height upstands	White semi-recessed wash hand basin	USB points to bedroom 1	CCTV security system coverage
Under-cabinet lighting	WC pan with soft-close seat	BT TV/FM connectivity to bedroom 1	Lifts to all floors
Integrated recycle bins	Concealed cistern & dual flushplate	<b>General</b>	Limited car parking spaces available for two and three-bedroom apartments (at an additional cost) located in the underground car park
Stainless steel single bowl sink and chrome tap to one-bedroom apartments	White steel bath	Freestanding Zanussi washer/dryer to hall cupboard	
Stainless steel 1 ½ bowl sink and chrome tap to two and three-bedroom apartments	Chrome-hinged bath screen by Merlyn Showers where applicable	Underfloor heating throughout	
Fully integrated appliances including Zanussi single oven, ceramic hob, dishwasher and fridge/freezer. Electrolux microwave and extractor fan.	White heated towel rail	Engineered flooring to kitchen, living area & hallway	
Eye-level cooking**	Bespoke mirrored wall-mounted vanity units	USB points to living area	
	Shaver socket (mounted within wall-mounted vanity unit)	Video door entry	
	Porcelain floor tiles	BT TV/Sky+/FM connectivity to living area	
	Ceramic wall tiles	Downlighters to hallway, kitchen, living area and bathroom(s)	
		Cat5e wiring	
		Superfast broadband (subject to subscription)	

\*\*Where possible

**CONSUMER CODE FOR HOME BUILDERS**  
www.consumercode.co.uk

HARROW SQUARE SALES SUITE  
HYGEIA BUILDING, 66-68 COLLEGE ROAD HA1 1BE  
SEARCH HARROW SQUARE TO FIND OUT MORE

**Hyde**  
New Homes

**BARRATT**  
— LONDON —

Computer generated images, maps and development layouts are intended for illustrative purposes and should be treated as general guidance only. The features, designs, materials and visual depictions of and in our Show Apartments and in our Show Apartment photography must be treated as general illustration and guidance. Images may also include upgrades which are available at extra cost. Furniture and furnishings are not included. Fixtures, fittings and specification may be subject to change as necessary and without notice and their accuracy or completeness is not guaranteed. Nor are they intended to form part of any contract or a warranty unless specifically incorporated into the contract. Please ask your Sales Adviser for the current specification. Individual features such as windows, brick and other materials' colours may vary, as may drainage, heating and electrical layouts. Floorplans are intended to give a general indication of the proposed floor layout only. The dimensions are accurate to within + or - 50mm. Dimensions should not be used for carpet or flooring sizes, appliance spaces or items of furniture. Please ask our Sales Adviser for details of the treatments specified for individual plots. Specification may be subject to change as necessary and without notice. Development layouts and landscaping, specification, dimensions and computer generated images are not intended to form part of any contract or warranty unless specifically incorporated in writing into the contract. The development name, Harrow Square, and building names are for marketing purposes only and may not be the designated postal address, which may be determined by The Post Office. All information in this document is correct to the best of our knowledge at the time of issue November 2018.